

# Tact Switches

## Series 95C

## 12mm Square

# Grayhill

INC.

### FEATURES

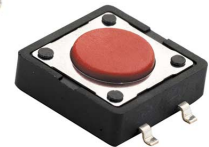
- Excellent Tactile Feedback
- Surface Mount Versions Compatible with SMT Assembly Including Infrared and Vapor Phase
- Ultraminiature and Lightweight Structure Suitable for High Density Mounting
- Insert Molded Terminals to Prevent Flux Build-Up During Soldering

### APPLICATIONS

Used in applications such as consumer electronics, audio equipment, PCs, VCRs, cable boxes, modems, communications equipment, controls, security and alarm equipment, and test and measurement equipment.

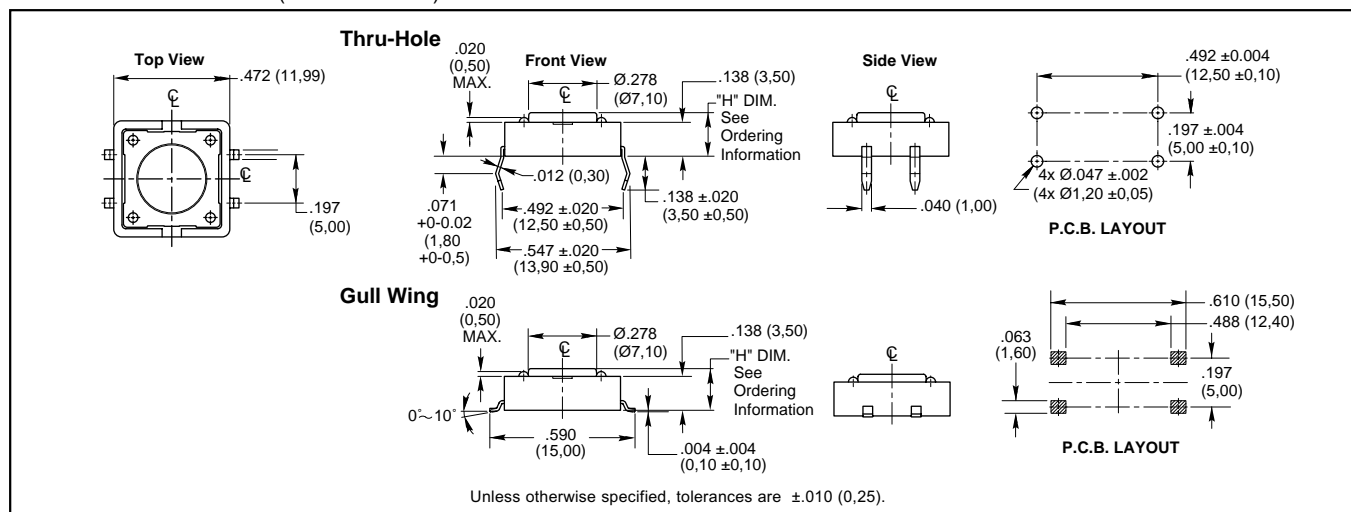


Thru-Hole



Gull Wing

### DIMENSIONS In inches (and millimeters)



### SPECIFICATIONS

#### Materials

**Base:** UL94V-0 Nylon thermoplastic, black  
**Cover:** Stainless steel, tin-plated  
**Actuator:** UL94V-0 Nylon high temperature thermoplastic  
**Terminal:** Brass with silver-plating  
**Contact:** Phosphor bronze with silver-plating  
**Cap:** Thermoplastic ABS

#### Electrical

**Rating:** 50mA, 12 Vdc  
**Life:** 160g: 500,000 cycles/260g: 50,000 cycles  
**Contact Resistance:** 100 mΩ max.  
**Insulation Resistance:** 100 MΩ min. at 500Vdc

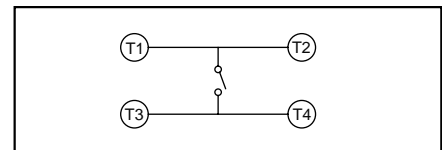
### ORDERING INFORMATION

<p><b>95C12A3GWR</b></p>	<b>Series</b>	95C
	<b>Size:</b> 12 = 12mm Square	
	<b>Height:</b> A = .169 (4,29); B = .335 (8,51)	
	<b>Packaging:</b> Blank = Tube or Bulk, R = Tape and Reel (see pkg note)	
	<b>Terminal Style:</b> Blank = Thru-hole, GW = Gull Wing	
	<b>Operating Force:</b> 3 = 160g, 4 = 260g	

Available from your local Grayhill Component Distributor.

For prices and discounts, contact a local Sales Office, an authorized local distributor, or Grayhill.

### CIRCUITRY



**Stop Strength:** Place the switch such that vertical, a static load of 3kg shall be applied in the direction of stem operation for a period of 15 seconds.

#### Soldering Process

**Hand Soldering:** Use a soldering iron of 30 watts, controlled at 320°C (608°F) approximately 2 seconds while applying solder.

**Reflow Soldering** (surface mount versions only): Peak temperature 240°C (464°F).

**Wave Soldering:** 260°C (500°F) maximum for 5 seconds subject to PCB .063 in. (1,6mm) thickness.

#### Packaging

Thru-Hole: Bulk, 500 pcs/bag.

Surface Mount: 40 pcs/tube, 700 pcs/reel (.169" height), 500 pcs/reel (.335" height).