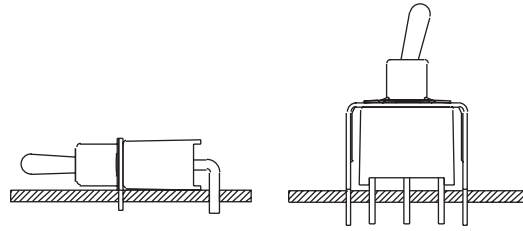


## SERIES 34B Sealed Miniature Toggle Switches

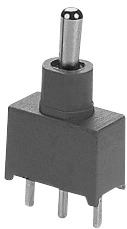
### FEATURES

- Save Space and Weight
- SPDT, DPDT, and 3PDT Circuitry
- Choice of Actuators, Bushings and Terminations
- Sealed per IP67



### MODELS In inches (and millimeters)

#### SPDT

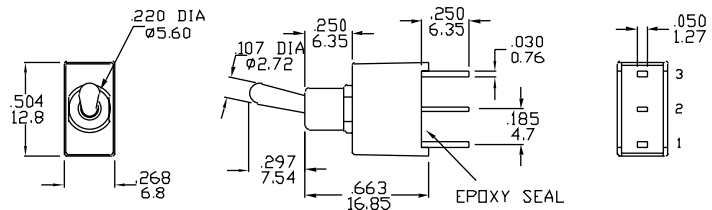


Model No.	Switching Position		
WSP1	ON	NONE	ON
WSP2	ON	NONE	(ON)
WSP3	ON	OFF	ON
WSP4	(ON)	OFF	(ON)
WSP5	ON	OFF	(ON)
Term. Comm.	2-3	OPEN	2-1

Schematic

( ) = Momentary

02Comm.



#### DPDT

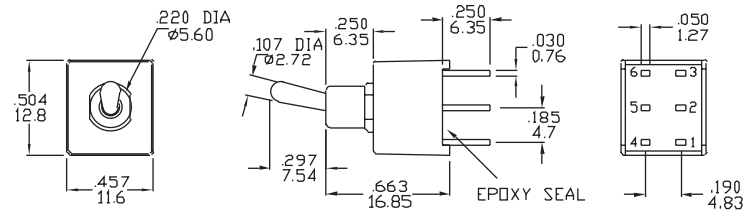
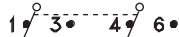


Model No.	Switching Position		
WDP1	ON	NONE	ON
WDP2	ON	NONE	(ON)
WDP3	ON	OFF	ON
WDP4	(ON)	OFF	(ON)
WDP5	ON	OFF	(ON)
Term. Comm.	2-3, 5-6	OPEN	2-1, 5-4

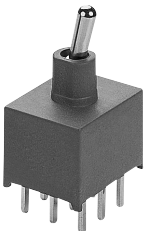
Schematic

( ) = Momentary

02Comm. 05Comm.



#### 3PDT

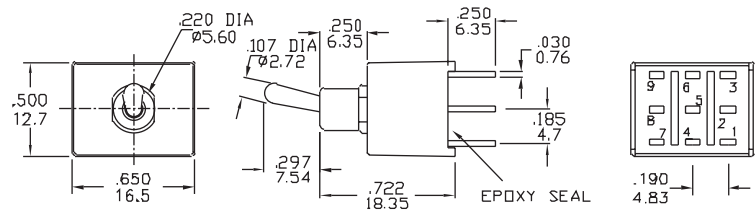


Model No.	Switching Position		
W3P1	ON	NONE	ON
W3P2	ON	NONE	(ON)
W3P3	ON	OFF	ON
W3P4	(ON)	OFF	(ON)
W3P5	ON	OFF	(ON)
Term. Comm.	2-3, 5-6	OPEN	2-1, 5-4

Schematic

( ) = Momentary

02Comm. 05Comm. 08Comm.



**ACTUATOR OPTIONS** In inches (and millimeters)

<p><b>1</b></p> <p>Subtract 2.55 for Bushing Option B1</p>	<p><b>2</b></p> <p>Subtract 2.55 for Bushing Option B1</p>
--	--

**BUSHING OPTIONS** In inches (and millimeters)

<p><b>B1</b></p>	<p><b>B4</b></p>
------------------	------------------

**TERMINATION OPTIONS** In inches (and millimeters)

<p><b>M1 Solder Lug</b></p> <p>THK .030 (0.76)</p>	<p><b>M2 P.C. Mount</b></p> <p>THK .030 (0.76)</p>
--	--

**M6 Right Angle P.C. Mount, Horizontal Actuation**

SPDT

Dimensions: .106 (2.7 mm), .504 (12.8 mm), .220 DIA (5.60 mm), .050 (1.26 mm), .200 (5.08 mm).

Dimensions: .107 DIA (2.72 mm), .663 (16.85 mm), .297 (7.54 mm), .125 (3.18 mm), .500 (12.7 mm), .050 (1.26 mm).

Dimensions: .185 (4.7 mm), .030 (0.76 mm), .050 (1.26 mm).

P.C. MOUNTING

Dimensions: .185 (4.7 mm), .073 DIA (1.85 mm), .500 (12.7 mm), .200 (5.08 mm).

DPDT

Dimensions: .106 (2.7 mm), .504 (12.8 mm), .220 DIA (5.60 mm), .050 (1.26 mm), .200 (5.08 mm).

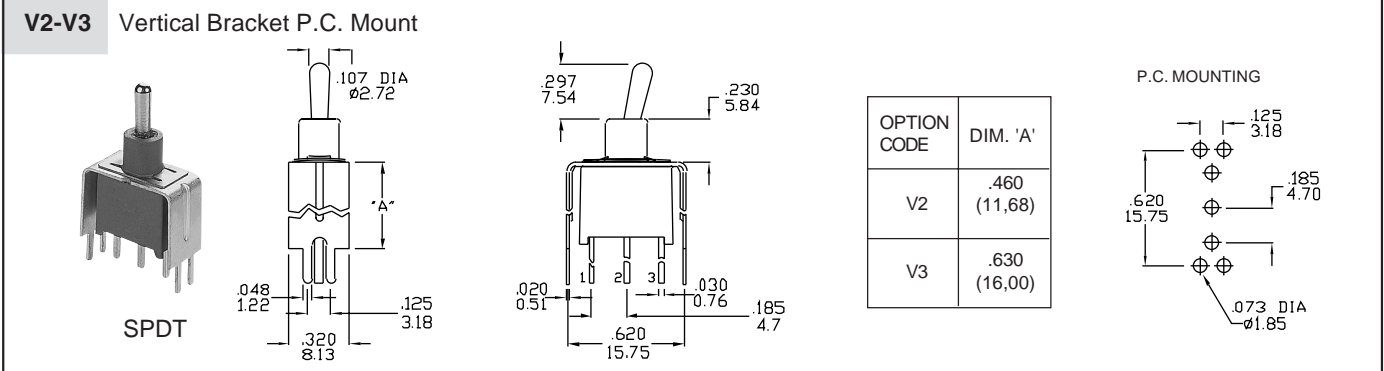
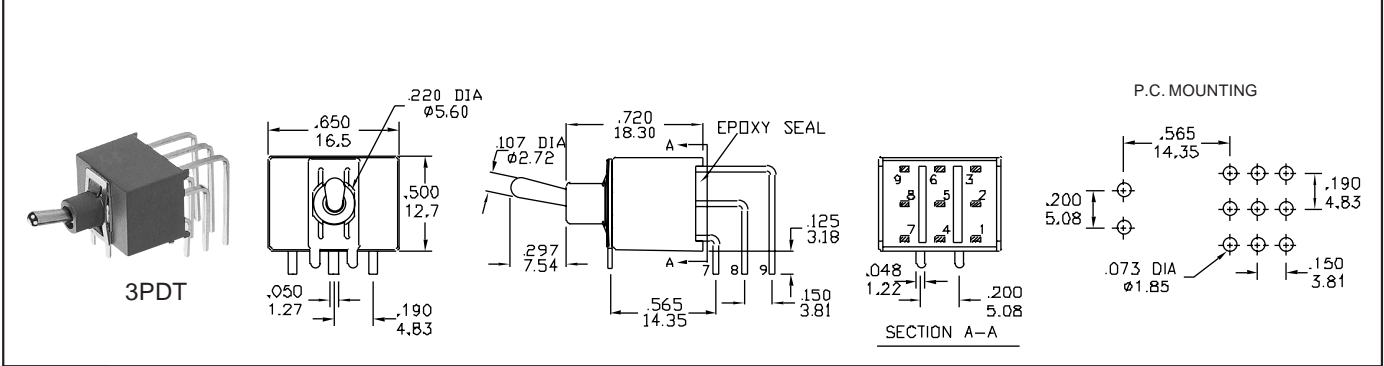
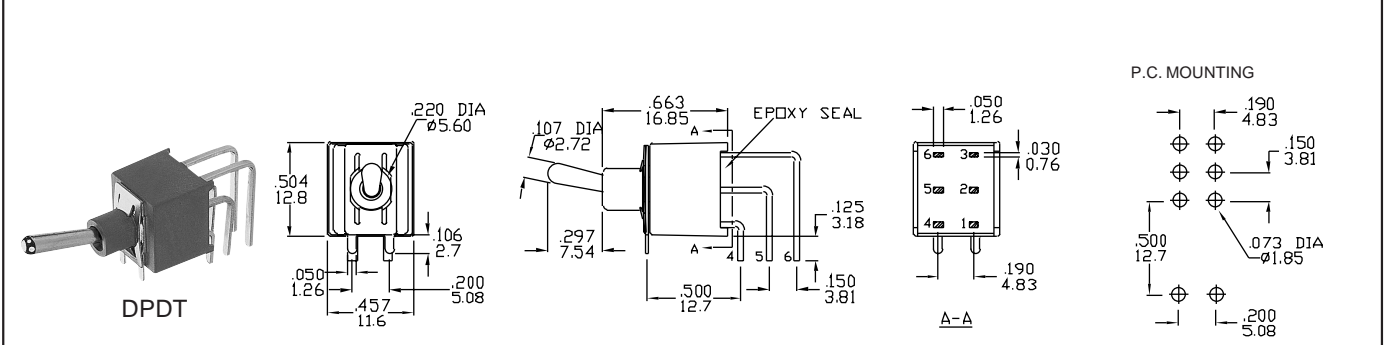
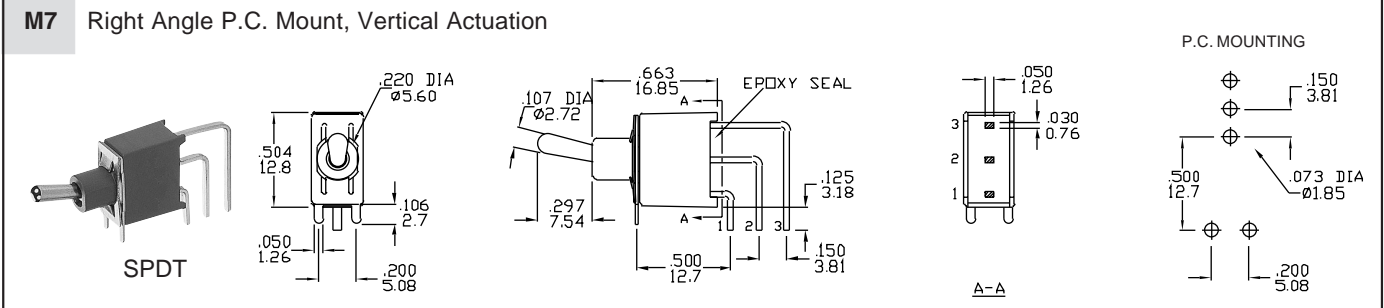
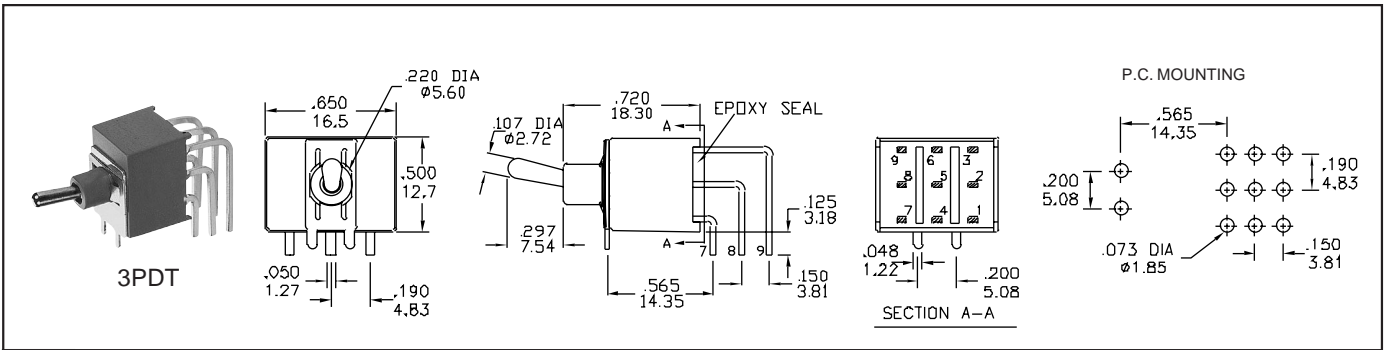
Dimensions: .107 DIA (2.72 mm), .663 (16.85 mm), .297 (7.54 mm), .125 (3.18 mm), .500 (12.7 mm), .050 (1.26 mm).

Dimensions: .030 (0.76 mm), .185 (4.7 mm), .050 (1.26 mm).

P.C. MOUNTING

Dimensions: .185 (4.7 mm), .150 (3.81 mm), .073 DIA (1.85 mm), .500 (12.7 mm), .200 (5.08 mm).

**TERMINATION OPTIONS** In inches (and millimeters)



Toggle Switches

**TERMINATION OPTIONS** In inches (and millimeters)

**DPDT**

Dimensions: .107 DIA Ø2.72, .297 7.54, .230 5.84, .048 1.22, .320 8.13, .125 3.18, .020 0.51, .030 0.76, .185 4.7, .620 15.75

OPTION CODE	DIM. 'A'
V2	.460 (11,68)
V3	.630 (16,00)

P.C. MOUNTING

Dimensions: .125 3.18, .185 4.70, .620 15.75, .190 4.83, .073 DIA Ø1.85

**3PDT**

Dimensions: .107 DIA Ø2.72, .297 7.54, .230 5.84, .048 1.22, .320 8.13, .125 3.18, .020 0.51, .030 0.76, .185 4.7, .620 15.75

OPTION CODE	DIM. 'A'
V2	.460 (11,68)
V3	.630 (16,00)

P.C. MOUNTING

Dimensions: .185 4.70, .620 15.75, .190 4.83, .073 DIA Ø1.85

**SPECIFICATIONS**

**RATINGS**

**Contact Rating:** Q option- 5 A with resistive load @ 125 VAC or 28 VDC; 2A with resistive load @ 250 VAC. R option- 0.4VA max @ 20 Vmax (AC or DC)

**Electrical Life:** 30,000 make-and-break cycles at full load

**Contact Resistance:** 10 milliohms max.

initial @ 2-4 VDC, 100 mA

**Insulation Resistance:** 1,000 megaohms minimum

**Dielectric Strength:** 1,000 V RMS @ sea level

**Operating Temperature:** -30°C to 85°C

**MATERIALS**

**Case and Bushings:** Glass-filled nylon 6/6,

flame retardant, heat stabilized (UL94V-0)

**Actuator:** Brass, chrome plated. Internal O-ring seal standard with all actuators.

**Frame:** Spring steel, black (standard)

**Switch Support:** Brass, tin-plated

**Actuator Pivot & Mounting Bracket:** Nylon

**Actuator Pivot Retainer:** Stainless Steel

**Terminal Seal:** Epoxy

**ORDERING INFORMATION**

SERIES	MODEL NO.	ACTUATOR	BUSHING	TERMINATION	CONTACT	SEAL
<b>34B</b>	<b>WSP1</b>	<b>2</b>	<b>B4</b>	<b>M2</b>	<b>R</b>	<b>E</b>
34B = Sealed Miniature Toggle Switches	Options: WSP1, WSP2, WSP3, WSP4, WSP5, WDP1, WDP2, WDP3, WDP4, WDP5, W3P1, W3P2, W3P3, W3P4, W3P5 (see models for switching positions)	Options: 1, 2 (see actuator options)	Options: B1, B4 (see bushing options)	Options: M1, M2, M6, M7, V2, V3 (see termination options)	R = Copper alloy, gold plate over nickel plate. Q = End terminal contact surface: coin silver Center terminal contact surface: copper alloy, silver plated	E = Epoxy seal

**Example Part Number:** 34BWSP12B4M2RE

Available from your local Grayhill Component Distributor. For prices and discounts, contact a local Sales Office, an authorized local Distributor In Beijing,China, Phone:(010)6858-5001, Fax: (010)6851-9889, Web: <http://www.hmcs.com.cn>

**HARDWARE** In inches (and millimeters)

**NUT**

Dimensions: .312 7.92, .062 1.57, 1/4-40NS

**LOCKING RING**

Dimensions: .468 DIA Ø11.89, .029 0.74, .065 1.65

**LOCK WASHER**

Dimensions: .408 DIA Ø10.36, .018 THK 0.46